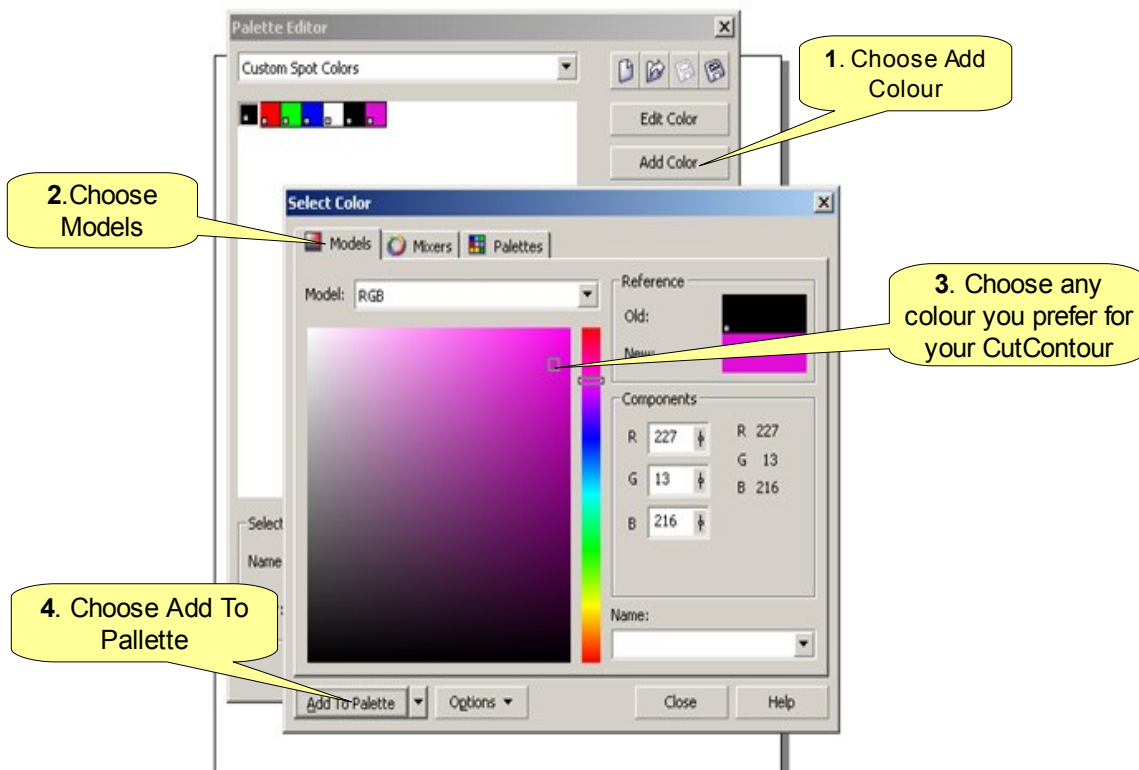
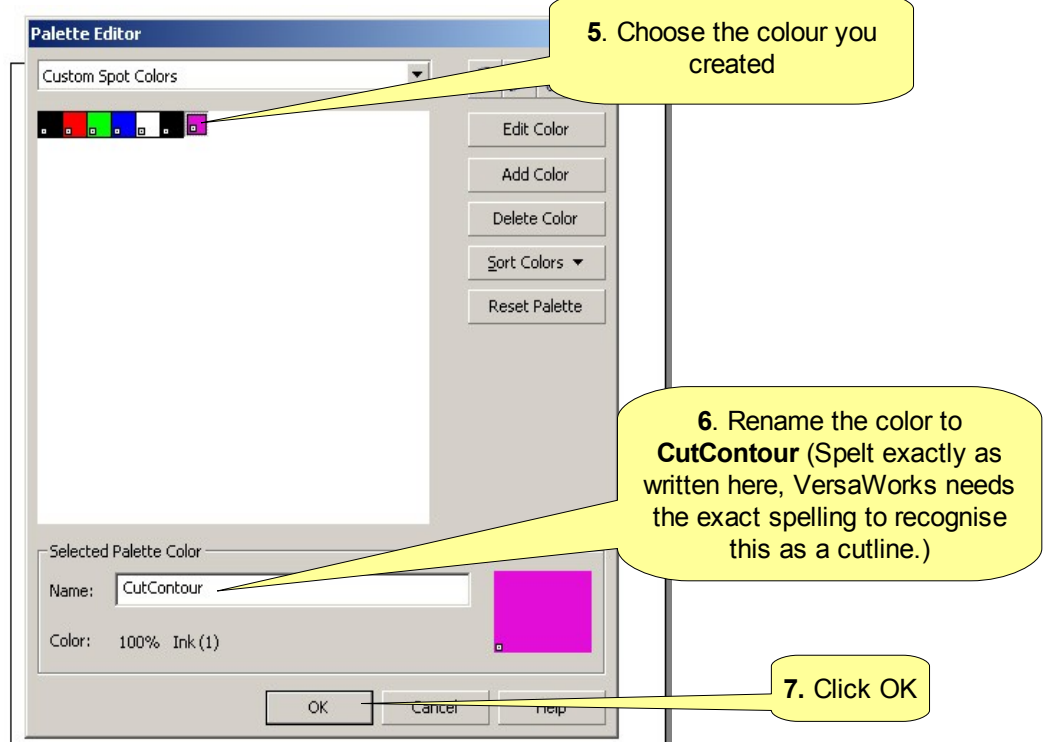


## Creating a CutContour with CoreIDRAW 11/12 or X3

In CoreIDRAW, open **Tools** menu, then choose **Palette Editor** this will open the Palette Editor Pop Up.

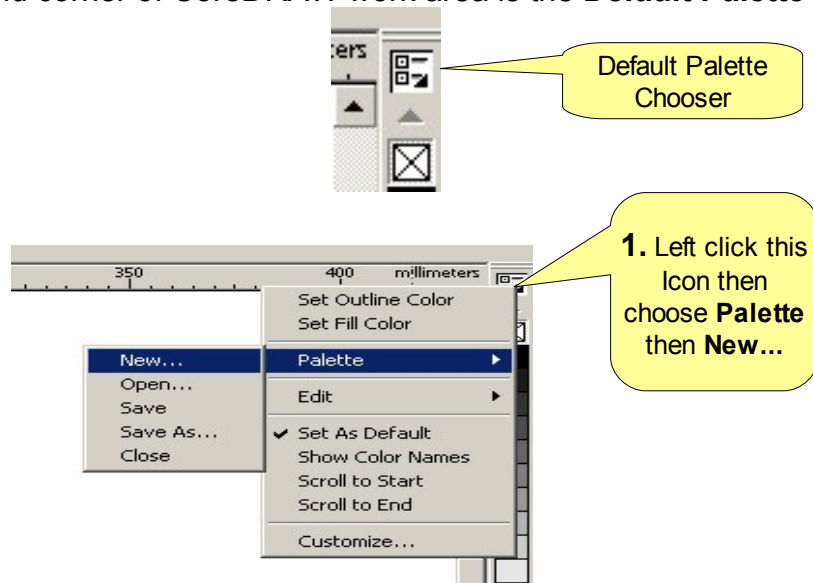


This will take you back to the Palette Editor.

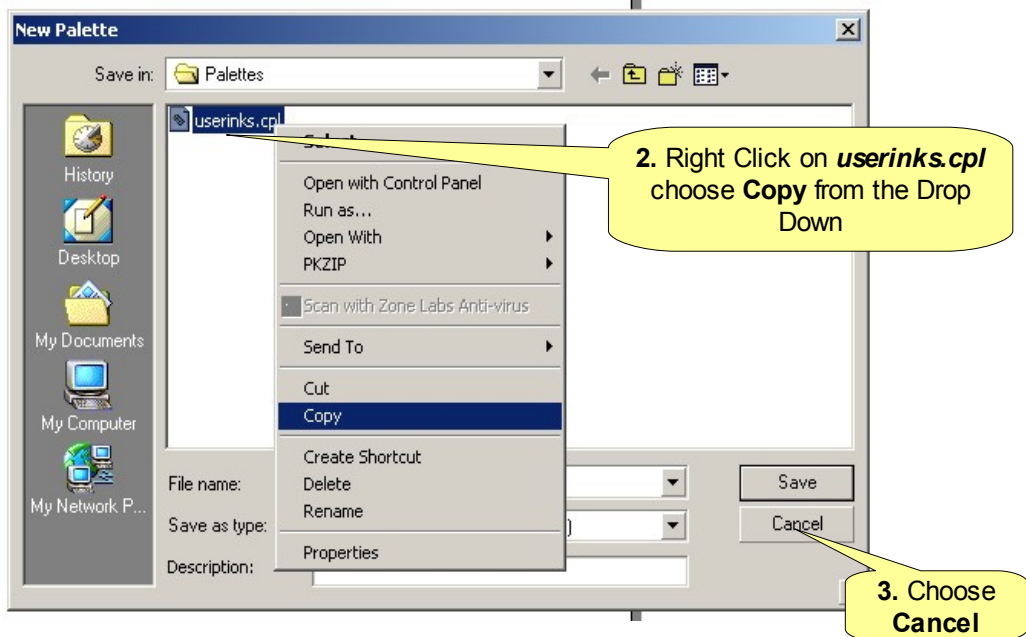


## Optional steps to dock your Spot Color Palette so its one click away.

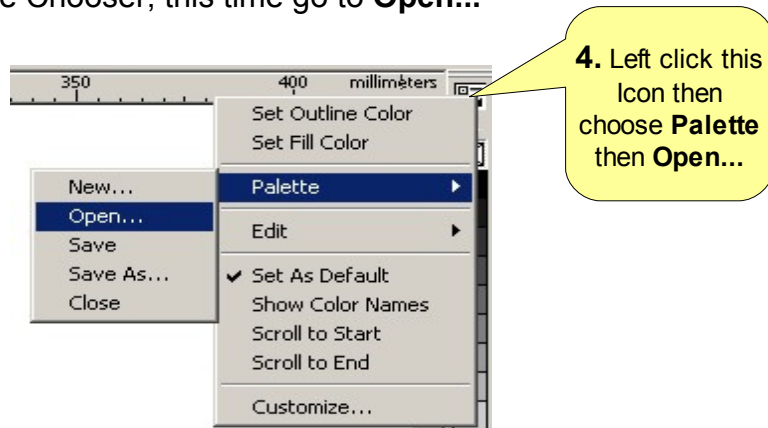
In the top right hand corner of CoreDRAW work area is the **Default Palette Chooser**



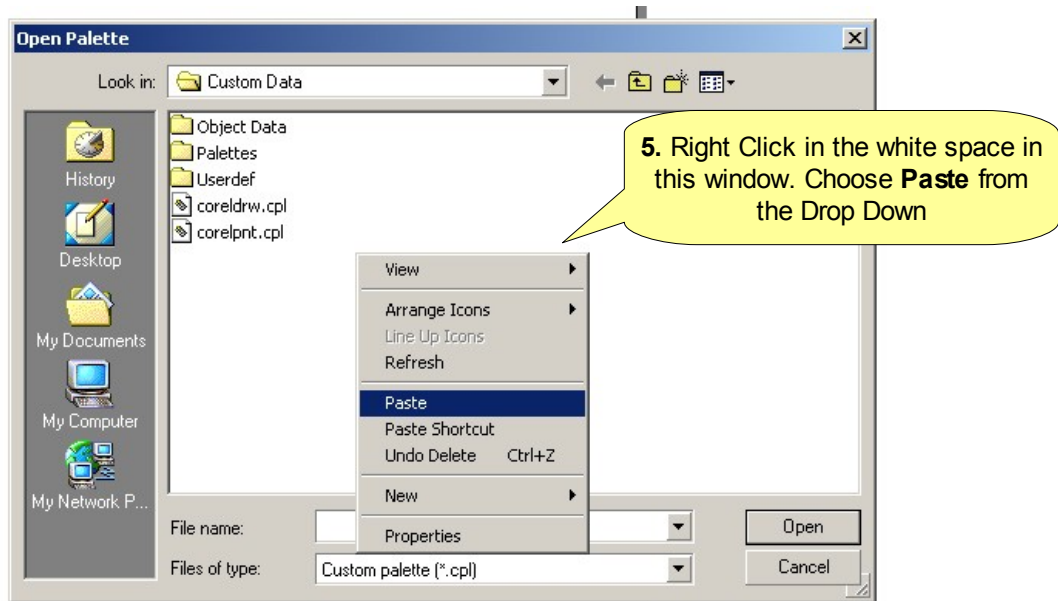
This will open the New Palette Pop Up. Displayed in the window will be *userinks.cpl*



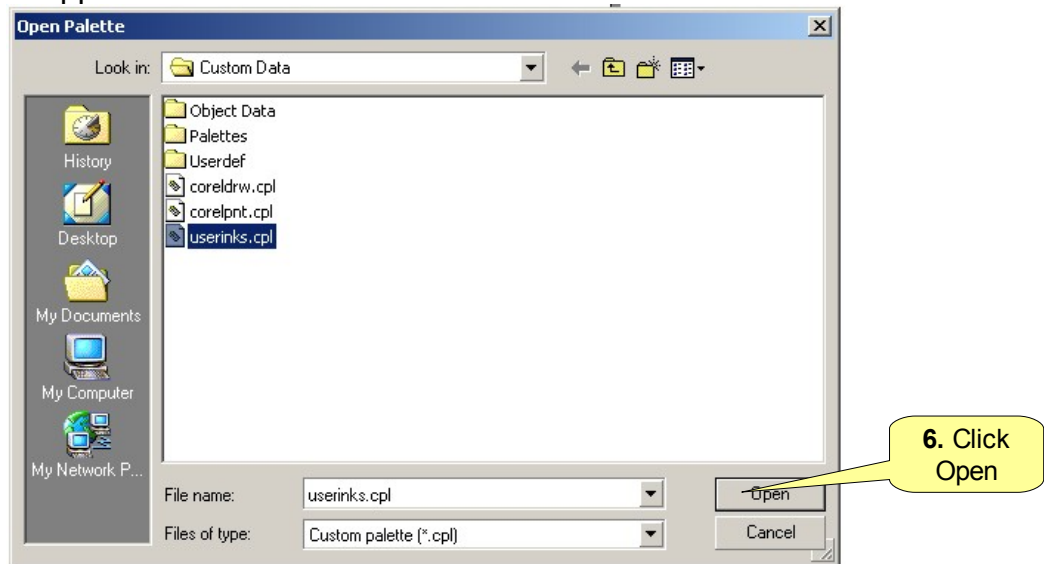
Open the Default Palette Chooser, this time go to **Open...**



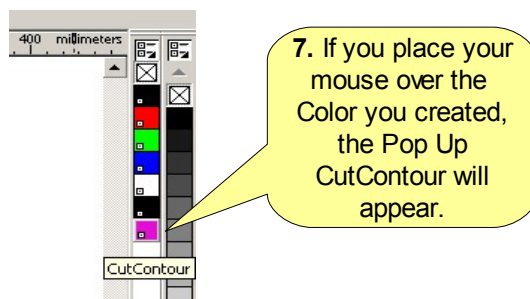
This will open the Open Palette Pop Up.



*userinks.cpl* will appear in the window.



When returning to CorelDRAW the userinks will be docked next to your Default Palette and will remain there as a default until you decide to delete or close them.



Simply right click on this color, and what ever is selected will have its outline changed to CutContour. Do not left click as this will fill the selected objects with CutContour the results could be random at best.

Roland Sub Sahara July 2006.